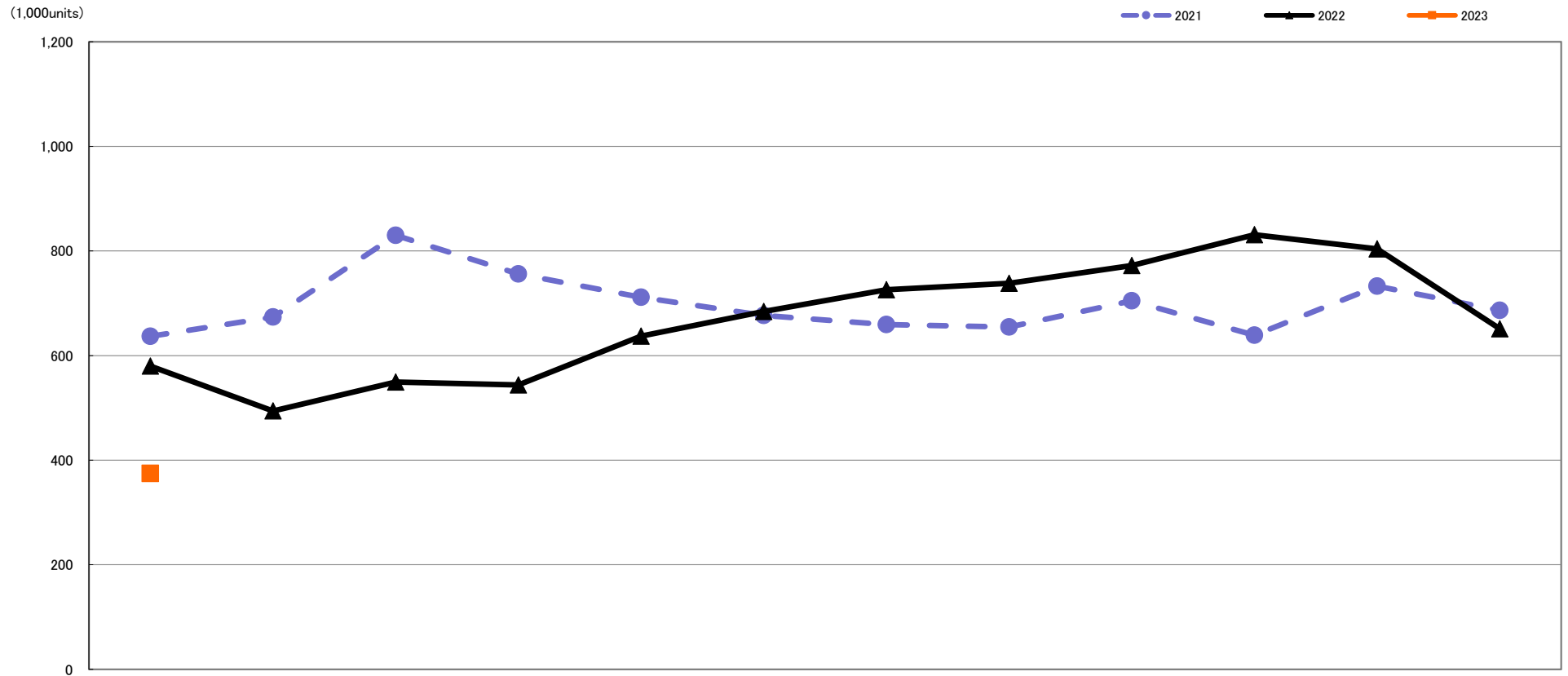
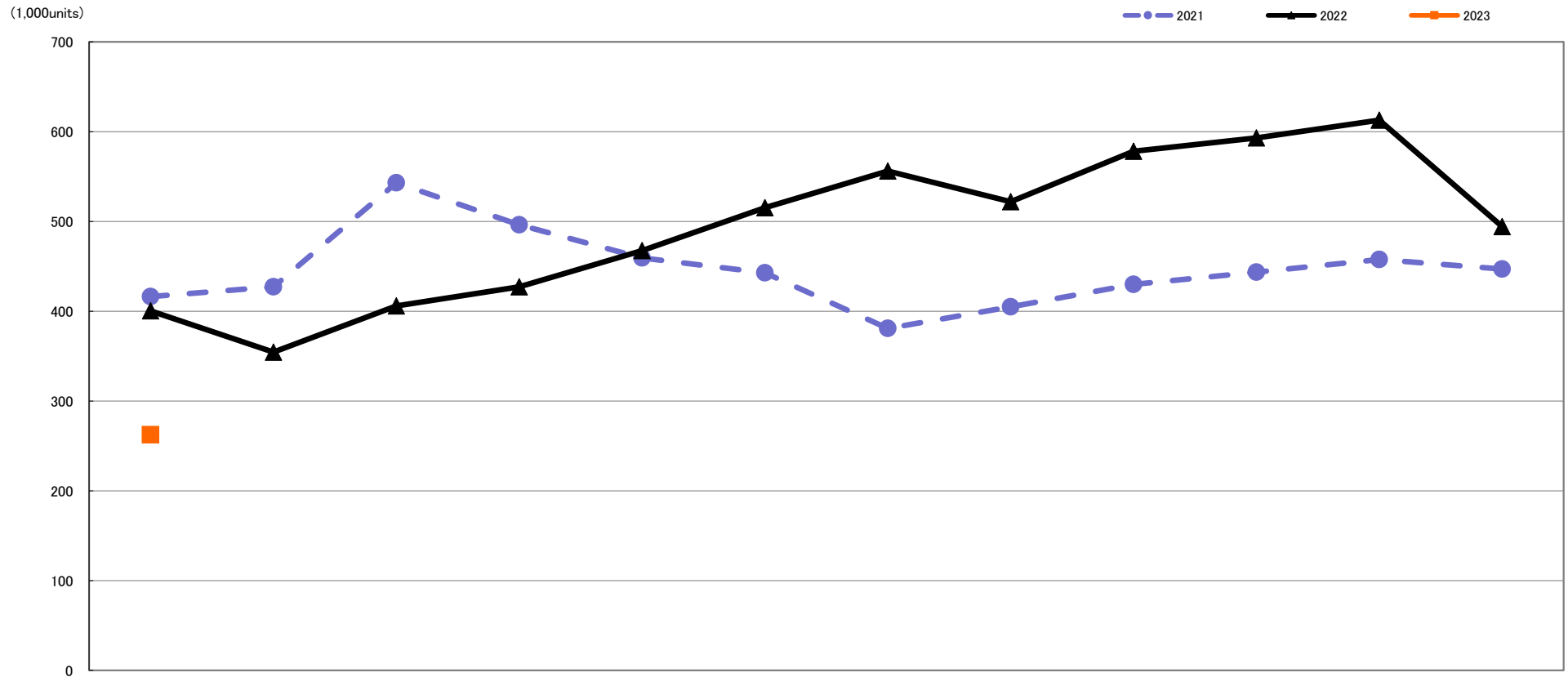


Quantity of Total Shipment of DSC [Worldwide] Comparison of 2021, 2022 and 2023 :Jan.



	Jan.	Feb.	Mar.	Apr.	May.	Jun.	Jul.	Aug.	Sep.	Oct.	Nov.	Dec.
2023	374,767											
	64.6%											
2022	579,737	494,071	549,490	544,054	637,305	684,136	725,944	738,290	772,015	831,081	804,098	651,377
	91.0%	73.4%	66.2%	72.0%	89.6%	101.1%	110.1%	112.8%	109.6%	130.1%	109.8%	94.9%
2021	636,863	673,564	830,006	756,155	711,362	676,803	659,427	654,746	704,702	638,853	732,536	686,504

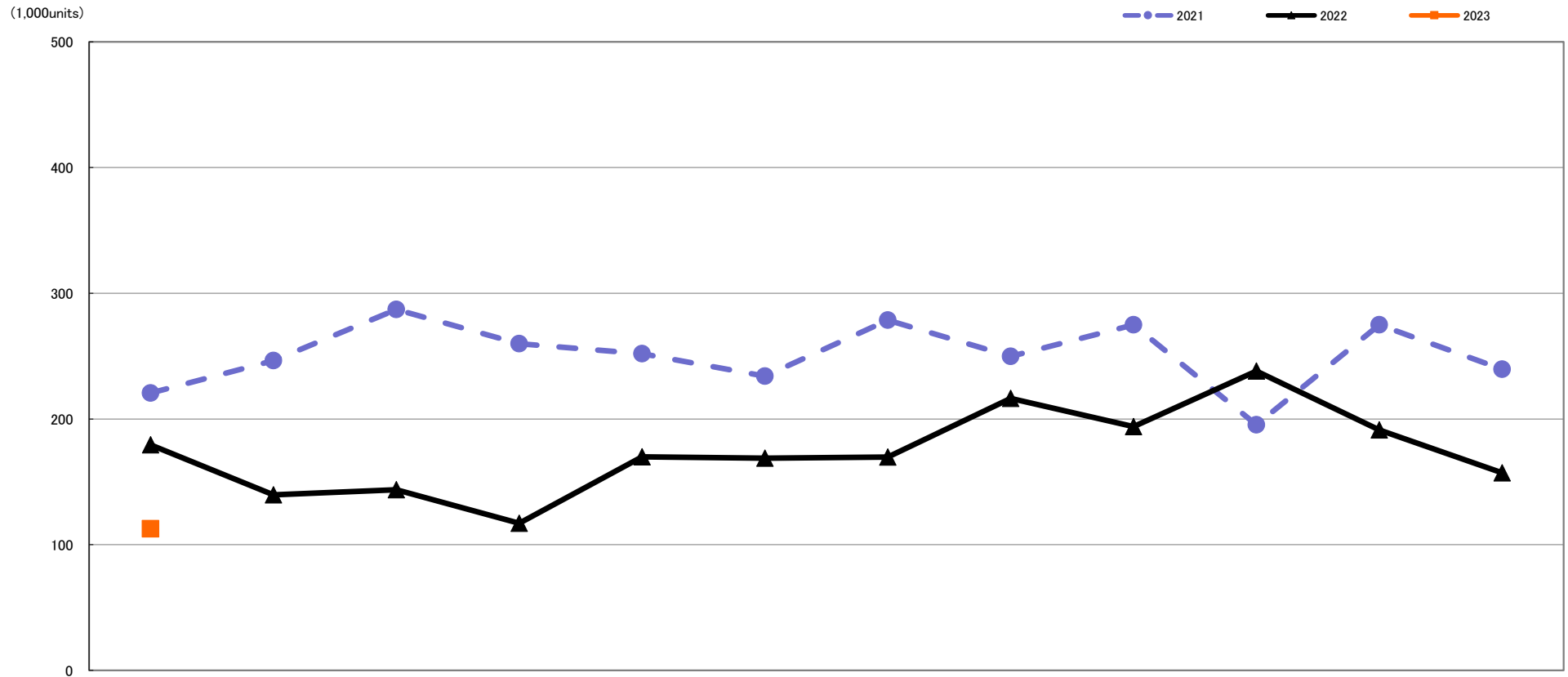
Quantity of Total Shipment of Interchangeable Lens DSC [Worldwide] Comparison of 2021, 2022 and 2023 :Jan.



	Jan.	Feb.	Mar.	Apr.	May.	Jun.	Jul.	Aug.	Sep.	Oct.	Nov.	Dec.
2023	262,228											
	65.5%											
2022	400,353	354,431	405,796	427,036	467,428	515,378	556,176	521,921	578,168	593,003	612,808	494,235
	96.2%	83.0%	74.7%	86.1%	101.7%	116.4%	146.0%	128.9%	134.5%	133.7%	133.9%	110.6%
2021	416,206	427,100	542,940	496,224	459,408	442,679	380,829	404,942	429,820	443,501	457,601	447,021

Quantity of Total Shipment of Built-in Lens DSC [Worldwide]

Comparison of 2021, 2022 and 2023 :Jan.



	Jan.	Feb.	Mar.	Apr.	May.	Jun.	Jul.	Aug.	Sep.	Oct.	Nov.	Dec.
2023	112,539											
	62.7%											
2022	179,384	139,640	143,694	117,018	169,877	168,758	169,768	216,369	193,847	238,078	191,290	157,142
	81.3%	56.7%	50.1%	45.0%	67.4%	72.1%	60.9%	86.6%	70.5%	121.9%	69.6%	65.6%
2021	220,657	246,464	287,066	259,931	251,954	234,124	278,598	249,804	274,882	195,352	274,935	239,483