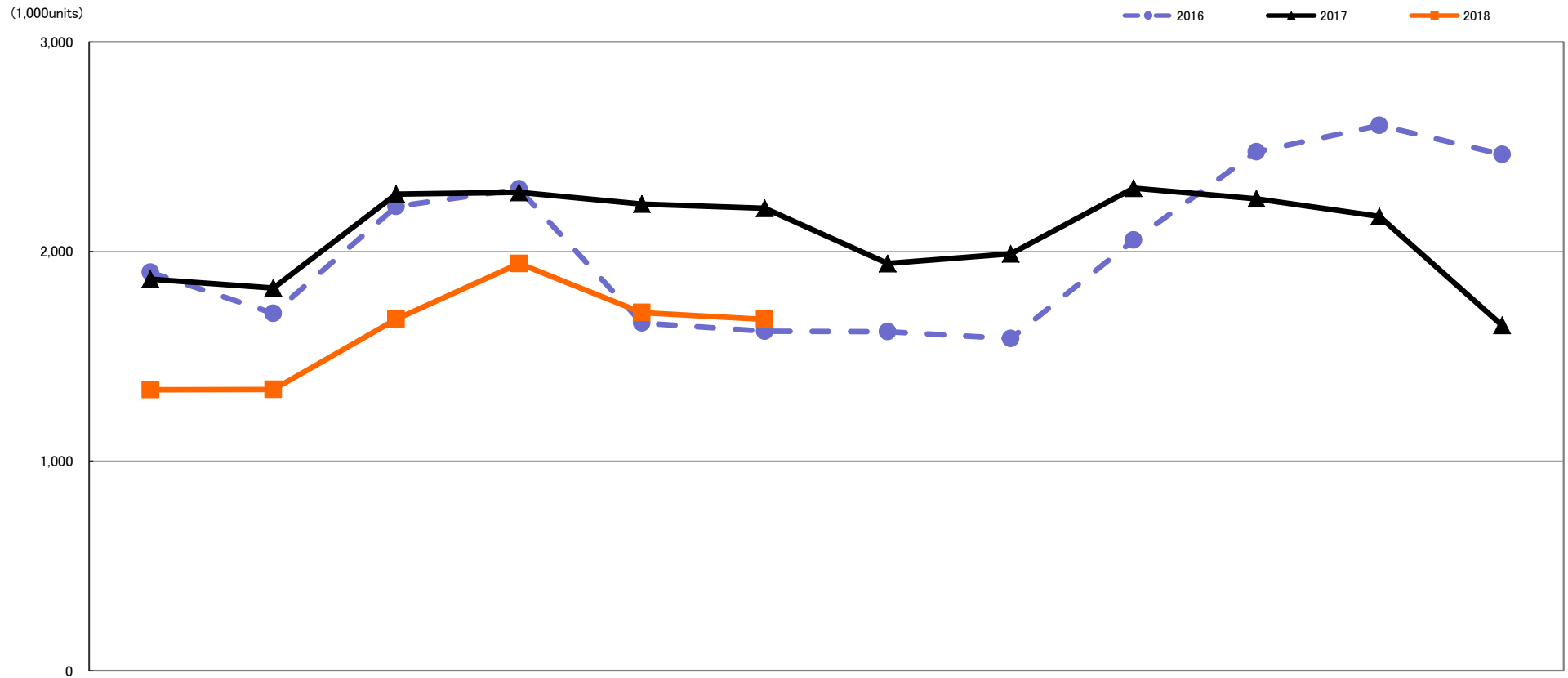


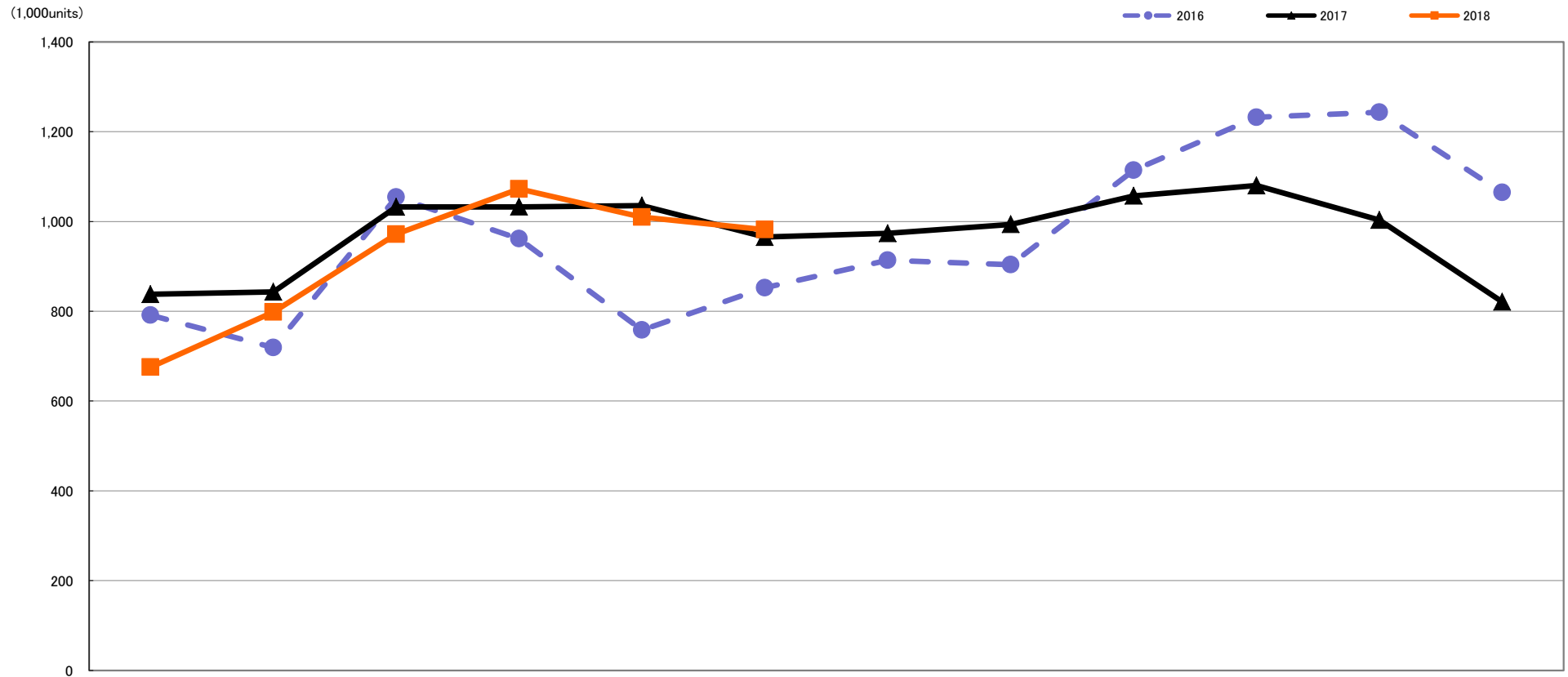
Quantity of Total Shipment of DSC [Worldwide] Comparison of 2016, 2017 and 2018 :Jan.-Jun.



	Jan.	Feb.	Mar.	Apr.	May.	Jun.	Jul.	Aug.	Sep.	Oct.	Nov.	Dec.
2018	1,340,492	1,340,995	1,677,150	1,942,182	1,708,671	1,675,096						
	71.8%	73.4%	73.8%	85.1%	76.8%	75.9%						
2017	1,867,875	1,825,764	2,273,892	2,281,635	2,225,535	2,205,758	1,942,192	1,988,945	2,301,700	2,251,484	2,166,788	1,646,918
	98.3%	107.1%	102.7%	99.3%	134.2%	136.2%	120.1%	125.6%	112.1%	90.9%	83.3%	66.9%
2016	1,900,087	1,704,581	2,214,668	2,297,688	1,658,353	1,619,311	1,616,828	1,584,177	2,054,037	2,475,607	2,601,792	2,462,741

Quantity of Total Shipment of Interchangeable Lens DSC [Worldwide]

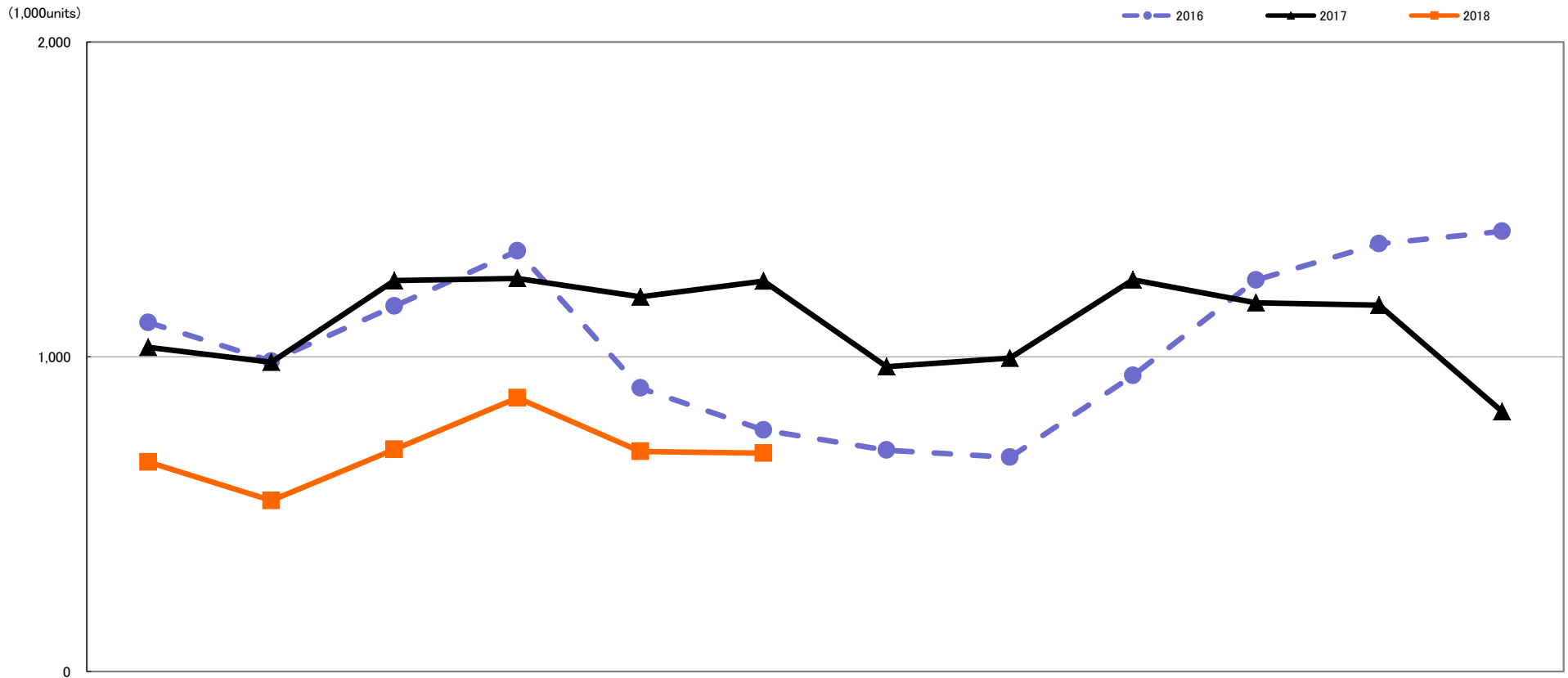
Comparison of 2016 , 2017 and 2018 :Jan.-Jun.



	Jan.	Feb.	Mar.	Apr.	May.	Jun.	Jul.	Aug.	Sep.	Oct.	Nov.	Dec.
2018	675,355	798,014	971,714	1,072,669	1,009,777	981,843						
	80.6%	94.6%	94.1%	103.9%	97.5%	101.7%						
2017	838,086	843,217	1,032,357	1,032,691	1,035,389	965,298	973,651	993,606	1,057,145	1,080,030	1,003,265	820,954
	105.9%	117.3%	97.9%	107.4%	136.6%	113.3%	106.5%	110.0%	94.9%	87.7%	80.7%	77.1%
2016	791,416	719,146	1,054,147	961,630	758,043	852,311	913,822	903,456	1,114,114	1,232,055	1,243,100	1,064,538

Quantity of Total Shipment of Built-in Lens DSC [Worldwide]

Comparison of 2016 , 2017 and 2018 : Jan.-Jun.



	Jan.	Feb.	Mar.	Apr.	May.	Jun.	Jul.	Aug.	Sep.	Oct.	Nov.	Dec.
2018	665,137	542,981	705,436	869,513	698,894	693,253						
	64.6%	55.3%	56.8%	69.6%	58.7%	55.9%						
2017	1,029,789	982,547	1,241,535	1,248,944	1,190,146	1,240,460	968,541	995,339	1,244,555	1,171,454	1,163,523	825,964
	92.9%	99.7%	107.0%	93.5%	132.2%	161.7%	137.8%	146.2%	132.4%	94.2%	85.6%	59.1%
2016	1,108,671	985,435	1,160,521	1,336,058	900,310	767,000	703,006	680,721	939,923	1,243,552	1,358,692	1,398,203